

Panorama

Aluminium Roller Shutters



The Panorama Shutter provides security for internal and external openings with provision for vision and ventilation. Panoramas are commonly used in shopping centres, arcades, large entrances, shop fronts and buildings near the sea.

FEATURES

- Interlocking aluminium slats
- Optional vision/ventilation

DOOR DIMENSIONS

- Maximum Height: 3600mm*
 - Maximum Width: 7500mm*
- *Total size must not exceed 25m².

NOTE: Size restrictions may occur for external applications. Consult manufacturer for further information.

RECOMMENDED SPECIFICATIONS

Panorama aluminium Roller Shutter with 100mm high by 19mm deep slats in 1.4mm thick material as manufactured by Airport Doors. The Roller Shutter operates by means of a flexible curtain made of interlocking aluminium slats winding onto an overhead drum and guided in aluminium door guides.



© Copyright 2015 Czapp Pty Ltd trading as Airport Doors. In line with Airport Doors' research and development program, Airport Doors reserves the right to change specifications at any time without notice.

Panorama

Aluminium Roller Shutters

CURTAIN

The Panorama curtain is manufactured from 100mm high by 19mm deep by 1.4mm thick specially extruded interlocking aluminium slats. Alternating slats are fitted with nylon end clips to prevent lateral movement of the curtain and to ensure smooth operation.

FINISH

Aluminium slats are available in natural anodised as standard and can be colour anodised or powder coated when specified.

VENTILATION (OPTIONAL)

When specified, the Roller Shutter slats can be slotted or perforated to provide ventilation.

Slotted Slats - Slats are 160mm wide by 58mm high at 100mm intervals. The slotting may be applied to any number of slats as specified. Fully slotted slats achieve airflow of approximately 27%.

Perforated Slats - Standard perforations are of 6.5mm diameter at a pitch of 13mm. Fully perforated Panorama shutters provide approximately 30% airflow. Alternatively non-standard perforations of 7.8mm diameter at a pitch of 14mm can be provided to allow approximately 21% airflow when fully perforated.

Fully slotted or fully perforated shutters are not suitable for external applications. Size restrictions may apply to internal Panorama Shutters that are fully slotted or fully perforated.

VISION PANELS (OPTIONAL)

Clear acrylic can be fitted to the back of slotted aluminium slats to prevent wind and dust from coming through whilst still providing light and vision.

BOTTOM RAIL

The bottom rail is manufactured from heavy gauge extruded aluminium and is fitted with a PVC bottom weather-seal. The bottom rail is attached to the bottom slat for adequate strengthening of the curtain. **NOTE:** For special applications, steel bottom rails may be used (as an alternative) to provide adequate strength and support.

DOOR GUIDES

The door guides are manufactured from 3mm thick specially extruded 116mm by 35mm aluminium sections.

DRUM & SPRING ASSEMBLY

The drum consists of a seamless or spiral welded, cylindrical tube revolving around a central steel axle and encasing helical torsion springs matched to suit door size and weight. The springs are rolled from high grade spring wire and tempered. The drum is designed to provide minimal deflection over the door width.

DRUM SUPPORT BRACKETS

Panorama Roller Shutter drum support brackets are manufactured from mild steel plate with a minimum thickness of 8mm.

FIXING REQUIREMENTS

The building construction (typically steel or concrete) must be structurally sound and have adequate strength to support the Roller Shutter and its fixing requirements. Consult manufacturer for further details.

LOCKING

Chain operated Panorama Roller Shutters are fitted with a steel chain lock designed to accommodate a padlock. As an optional extra, chain operated shutters can also be fitted with two shoot-bolts, fitted internally to each end of the bottom rail. Padlocks not included.

Electric operated (motorised) doors are secured by the motor and its controls.

NOTE: If optional shoot-bolts are fitted to a motorised shutter, a cut out switch for each shoot-bolt must be fitted.

MULLIONS (OPTIONAL)

Centre door mullions can be used for wide openings to create multiple door installations. Removable and sliding type mullions are manufactured from steel or aluminium of approximately 300mm width. A removable mullion which allows the mullion to be removed by hand is suitable up to 2.4m high. A sliding mullion is manually operated by disengaging top and bottom latches and sliding to one side of the doorway on an overhead sliding track fixed to the underside of the lintel. A fixed type mullion (typically made of steel) is not removable and is fixed to the floor and lintel.

OPERATION

Panorama Roller Shutters operate by means of a flexible interlocking aluminium curtain, winding onto an overhead drum and guided in aluminium door guides. They are installed to the inside face of an opening and overlap the nibs and lintel ('behind-fix'). Panorama Roller Shutters are available in chain operation or electric operation.

CHAIN OPERATION

Gearing is fitted to one end of the Roller Shutter and matched to suit the door size and weight. The curtain is opened and closed by hand chain via a reduction gear mechanism.

NOTE: Chain operation is not recommended for Panorama Roller Shutters over 20m².

MOTORISATION

Motorisation is via a geared electric motor and incorporates a standard reversing starter push-button station (control box) and emergency hand chain operation (in case of a power outage). The standard push-button station offers 'Up', 'Down' and 'Stop' functions.

Operator selection is dependent on the door size, door weight, wind loading, availability of power and the door's application. Motorisation is available in three-phase (415v) as standard, or single-phase (240v) power.

The provision of adequate mains power supply and isolator or GPO (as required) to motor location is the responsibility of the client. Wiring from the isolator and commissioning of the door, motor controllers and any ancillary hardware is by client, unless otherwise stated in writing.

Optional extras, such as high cycle motorisation, battery back-up and access control accessories are available upon specification.

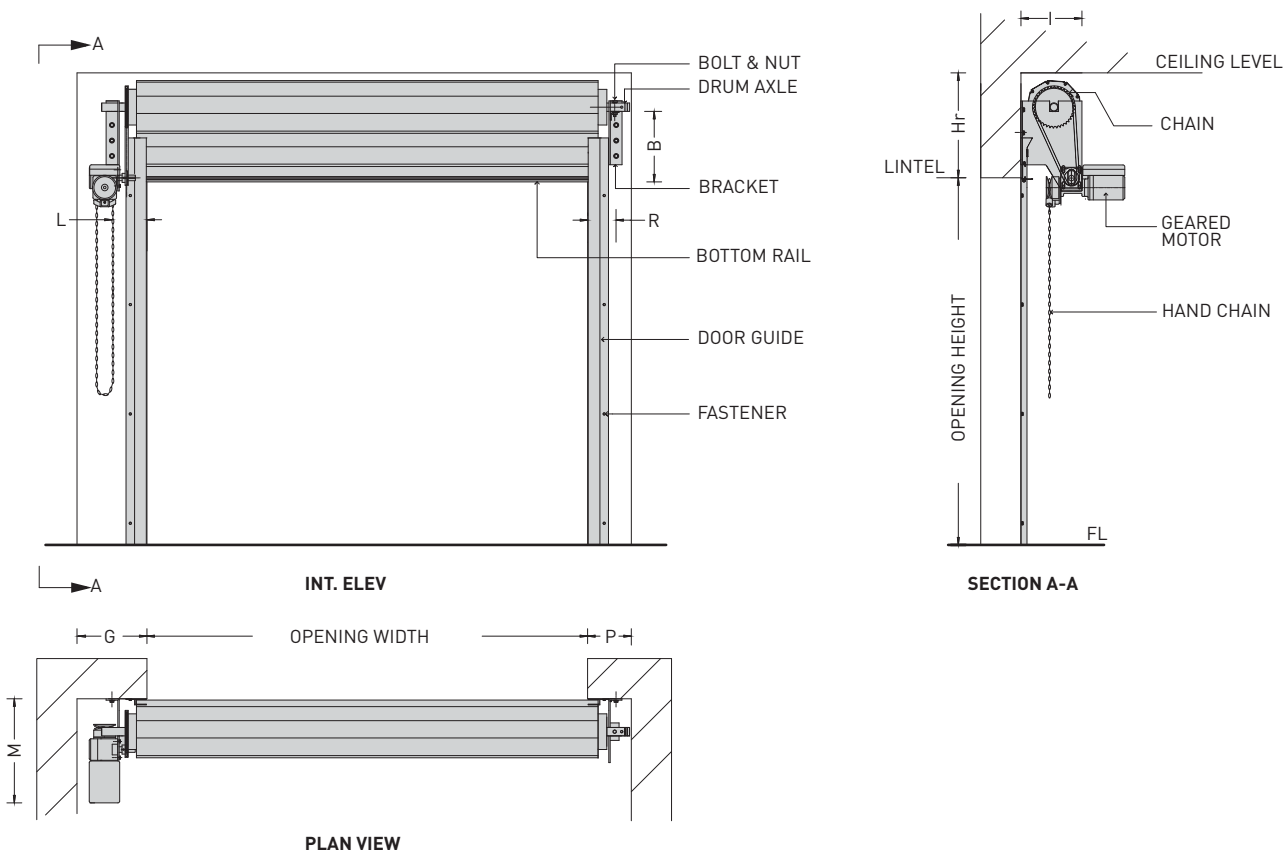
For further information see Door Operators & Accessories.

OPTIONS

- Tapered bottom
- Ventilation/Vision
- Mullions

Panorama

Technical Specs: Aluminium Roller Shutters



CLEARANCE DETAILS									
HEIGHT UP TO	WIDTH UP TO 7.5m				OPERATION	DRIVEN END		PLAIN END	
	Hr	B	I	M		G	L	P	R
2100	600	380	430	595	HAND OPERATION	300	190	250	170
3000	640	400	480	595	MOTORISATION (STD)	500	190	250	170
3600	675	430	530	595	MOTORISATION (INBOARD*)	250	180	250	170

Notes:

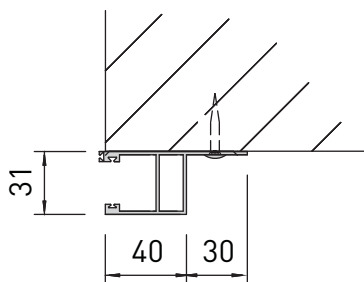
- Standard chain operated or motorised doors have the drive unit fitted outboard.
- *Inboard motorisation is available when sufficient clearance is not available for standard motorisation. If fitted inboard, the drive unit fits partly within opening under drum/curtain. Add 150 to dimension M for inboard motorised doors.
- Door-stops on door guides are fitted on chain-operated shutters.
- Total door size must not exceed 25m².

Door Guides

Technical Specs: Aluminium Roller Shutters

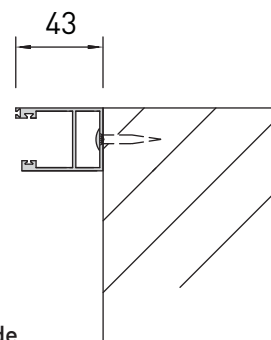
SERIES 25 STANDARD DOOR GUIDES

BEHIND WALL FIXING



Aluminium Guide

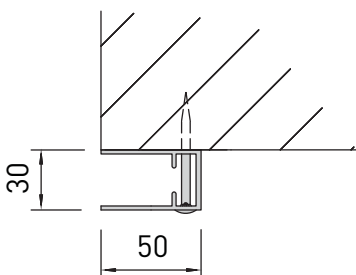
BETWEEN WALL FIXING



Aluminium Guide

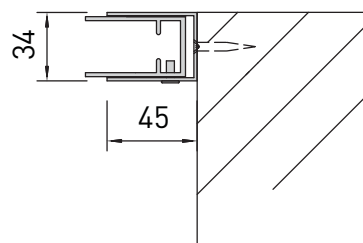
SERIES 63 & CLEARLITE STANDARD DOOR GUIDES

BEHIND WALL FIXING



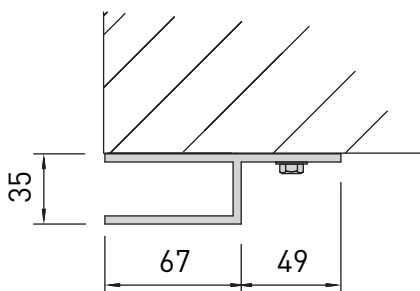
Aluminium Guide

BETWEEN WALL FIXING



Aluminium Guide With Take Up Channel

PANORAMA STANDARD DOOR GUIDE



SUPA SLAT INSULATED & NON INSULATED STANDARD DOOR GUIDE

